

## Datenblatt / Data sheet – McGrey Passive Speaker System PA / PAS

Typ / Type	McGrey PA-110 10"/2 Box	McGrey PA-120 12"/2 Box	McGrey PA-150 15"/2 Box	MCGrey PAS-115 15" SUB	MCGrey PAS-118 18" SUB
Artikelnummer / Article No.	00040480	00040481	00040482	00040483	00040484
Leistung / Power	50 Watt (RMS) 200Watt (Peak)	75 Watt (RMS) 300Watt (Peak)	100 Watt (RMS) 400Watt (Peak)	300 Watt (RMS) 1200Watt (Peak)	450 Watt (RMS) 1800Watt (Peak)
Übertragungsbereich / Frequency Range	70Hz – 18kHz	55Hz – 18kHz	40Hz – 18kHz	45Hz – 1.5kHz	38Hz – 1.5kHz
Lautsprecher / Woofer	1 x 10"	1 x 12"	1 x 15"	1 x 15"	1 x 18"
Anschlüsse / Connectors	SPK kompatibel (compatible) IN/OUT & Klinke (jack) 6.35mm In/Out			Speakon kompatibel / Speakon compatible Input = Fullrange / Top Out = Hihpass Filter 150Hz	
Impedanz / Impedance	8 Ohms	8 Ohms	8 Ohms	4 Ohms	4 Ohms
Abmessungen / Dimensions	B / W = 380(240) mm T / D = 290 mm H = 510 mm	B / W = 380(255) mm T / D = 310 mm H = 560 mm	B / W = 450(290) mm T / D = 345 mm H = 640 mm	B / W = 470 mm T / D = 480 mm H = 580 mm	B / W = 470 mm T / D = 480 mm H = 580 mm
Gewicht / Weight	10.2 kg	12.0 kg	16.2 kg	25.0 kg	33.1 kg

**Der Subwoofer enthält eine Frequenzweiche!  
Bei Verwendung von Subwoofer mit Topteil:  
Geben Sie das Signal erst in den Subwoofer.  
Danach vom Subwoofer in das Topteil.**

**The subwoofer includes a crossover!  
When using a subwoofer with top:  
First, put the signal into the subwoofer.  
Then from the subwoofer into the top.**



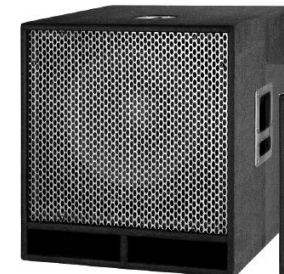
PA-110



PA-112



PA-115



PAS-118



PAS-115

## Installationsanleitung für McGrey PA/PAS Lautsprecher



Vor dem Anschließen der Lautsprecherleitungen stellen Sie sicher, dass der Verstärker abgeschaltet ist und kein Signal oder Spannung am Verstärkerausgang anliegt.

### Sicherheitsbestimmungen:

Bitte packen Sie die Lautsprecher vorsichtig aus und prüfen Sie es auf eventuelle Transportschäden. Nehmen Sie die Lautsprecher erst in Betrieb, wenn Sie sich mit dieser Bedienungsanleitung vertraut gemacht haben. Es dürfen keine unbefugten Veränderungen an dem Gerät vorgenommen werden. Beim Hören von dauerhaft lauter Musik können Gehörschäden auftreten. Achten Sie auf einen angemessenen Lautstärkepegel.

### Montage und Anschluss:

Stellen Sie die Lautsprecher auf einer ebenen, stabilen Fläche auf, für die Topteile benutzen Sie stabile Boxenständer oder Distanzstangen. **Die Subwoofer PAS-115 und PAS-118 beinhalten eine integrierte Frequenzweiche. Stecken Sie das Boxenkabel daher von der Endstufe zunächst in den Subwoofer, danach stecken Sie das zweite Boxenkabel vom Subwoofer in das Top-Teil. ACHTUNG: NIE ANDERSHERUM!** Beste Klangergebnisse erzielen Sie wenn Sie um die Lautsprecher und vor allen Dingen in Abstrahlrichtung entsprechende Abstände zu Möbeln und Gegenständen. einhalten. Benutzen Sie ausreichend dimensionierte (Durchmesser) und hochwertige Lautsprecherkabel. Achten Sie auf richtigen Anschluss aller Lautsprecher. Bei falschem Anschluss mehrerer Lautsprecher entstehen Phasenverschiebungen, Interferenzen und dadurch schlechte Soundqualität. Verwenden Sie nur Endstufen welche seitens Anschlussdaten die Lautsprecher nicht überlasten. Für Schäden aufgrund falschem oder mangelhaftem Anschluss oder Montage übernimmt der Hersteller keinerlei Garantie und kann nicht haftbar gemacht werden. Wenn sie die Lautsprecher angeschlossen haben drehen Sie den Lautstärkeregel am Verstärker auf „Null“ und schalten Sie den Verstärker ein. Erhöhen Sie dann langsam die Lautstärke auf den gewünschten Pegel.

### WEEE-Erklärung



Ihr Produkt wurde mit hochwertigen Materialien und Komponenten entworfen und hergestellt, die recycelbar sind und wiederverwendet werden können. Dieses Symbol bedeutet, dass elektrische und elektronische Geräte am Ende ihrer Nutzungsdauer vom Hausmüll getrennt entsorgt werden müssen. Bitte entsorgen Sie dieses Gerät bei Ihrer örtlichen kommunalen Sammelstelle oder im Recycling Center. Bitte helfen Sie mit, die Umwelt, in der wir leben, zu erhalten.

Technische Änderungen und Änderungen im Erscheinungsbild vorbehalten. Alle Angaben entsprechen dem Stand bei Drucklegung. Für die Richtigkeit und Vollständigkeit der enthaltenen Beschreibungen, Abbildungen und Angaben übernimmt Musikhaus Kirstein GmbH keinerlei Gewähr. Abgebildete Farben und Spezifikationen können geringfügig vom Produkt abweichen. Musikhaus Kirstein GmbH - Produkte sind nur über autorisierte Händler erhältlich. Distributoren und Händler sind keine Handlungsbevollmächtigten von Musikhaus Kirstein GmbH und haben keinerlei Befugnis, die Musikhaus Kirstein GmbH in irgendeiner Weise, sei es ausdrücklich oder durch schlüssiges Handeln, rechtlich zu binden. Diese Bedienungsanleitung ist urheberrechtlich geschützt. Jede Vervielfältigung, bzw. jeder Nachdruck, auch auszugsweise, und jede Wiedergabe der Abbildungen, auch in verändertem Zustand, ist nur mit schriftlicher Zustimmung der Firma Musikhaus Kirstein GmbH gestattet.

### Musikhaus Kirstein GmbH

Bernbeurener Str. 11 - 86956 Schongau – Germany

## Installation guide for McGrey PA/PAS Speaker



Caution: Make sure that when you connect the speaker cables, the amplifier is turned OFF and no signal resp. output voltage is on output connectors of amplifier.

### Safety Instructions:

Unpack the speakers carefully and check them for transport damages. Read the user manual before using the PA/PAS speakers. If the devices are damaged, don't use them. Do not open, inside the devices are no parts that unqualified people can service. Keep away from children. Please make sure that there is no obvious transport damage.

### Installation:

Place speakers on flat solid ground, for the top speakers use solid speaker stands or distance poles. Adjust the speakers for the desired direction of emission. **The PAS-115 and PAS-118 subwoofers include an integrated crossover on the "Out" connectors (jack and SPK). Therefore, first plug the speaker cable from the power amplifier „Output“ into the subwoofer „Input“, then plug the second speaker cable from the subwoofer „Top out“ into the top speaker (e.g. McGrey PA-110 etc.). ATTENTION: NEVER THE OTHER WAY ROUND!** To get best sound quality make sure that no furniture or other objects are in direction of sound emission. Keep distance to objects and walls at left, right and rear sides. This will improve the sound quality. Use only speaker cables with sufficient diameter. Connect the speaker cable with amplifier terminal. If several speakers are used and connected wrong, there will be phase shifted sound emission and therefore interferences and bad sound quality. Use only amplifiers with output data according to speaker specification. Damages, which are caused by wrong wiring (connection) or wrong amplifier data, are not covered by supplier warranty. After you made all connections set volume level of your amplifier to "zero". Switch on your amplifier and increase volume to desired level.

### WEEE-Declaration



Your product is designed and manufactured with materials and components of high quality, which can be recycled and reused. The symbol means that your product should be disposed of separately from household waste when it reaches its end of life. Please dispose of this equipment at your local collection point or recycling center. Please help to protect the environment in which we all live.

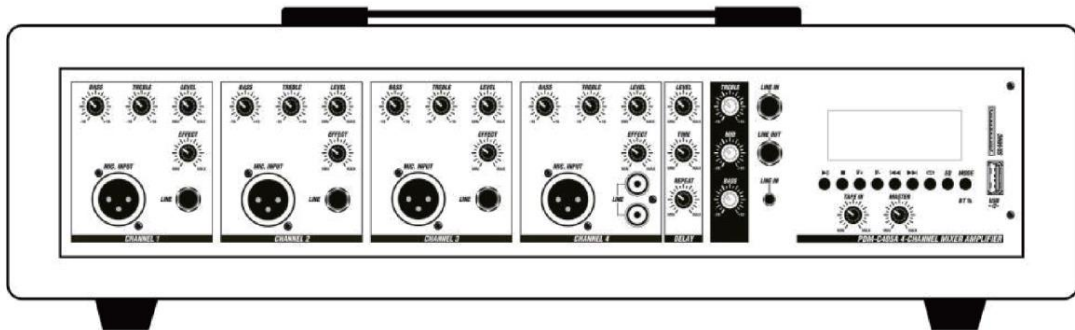
All specifications and appearances are subject to change without notice. All information was correct at time of printing. Musikhaus Kirstein GmbH does not guarantee for the accuracy or completeness of any description, photograph or statement contained in this manual. Printed colors and specifications may vary slightly from product.

Products from Musikhaus Kirstein GmbH are only sold through authorized dealer. Distributors and dealers are not agents of Musikhaus Kirstein GmbH and have no authority to bind Musikhaus Kirstein GmbH legally in any way. This manual is protected by copyright. Any copying or reprint, even in excerpts, is only allowed with written consent of Musikhaus Kirstein GmbH. The same applies to reproduction or copying of images, even in altered form.



# Pronomic PM42U MKII MP3 Power Mixer

Item No.: 00067254



## User manual

Version: 07.2020

© 2020

This manual is protected by copyright. Any copying or reprint, even in excerpts, is only allowed with written consent of Musikhaus Kirstein GmbH. The same applies to reproduction or copying of images, even in altered form.

## Content

<b>Important safety instructions:</b> .....	<b>2</b>
<b>Detailed safety instructions:</b> .....	<b>3</b>
<b>Instruction:</b> .....	<b>4</b>
<b>Description of the front view:</b> .....	<b>5</b>
<b>Description of the rear view:</b> .....	<b>8</b>
<b>Specifications</b> .....	<b>9</b>
<b>Maintenance</b> .....	<b>10</b>
<b>Cleaning</b> .....	<b>10</b>
<b>WEEE Declaration (Waste of Electrical and Electronic Equipment)</b> .....	<b>10</b>

Thank you for purchasing our product. To ensure you will be completely satisfied with this product, read and understand these manual carefully before use. Keep the manual in a safe place. The Operating Manual must be passed on to all subsequent users.



Follow the Operating Manual!



The signal word WARNING identifies hazards, which can result without precautions in serious injury.



The signal word NOTE indicates general precautions, which should be observed in handling the product.



Images used in this manual may differ slightly from the actual product, as long as it has no adverse effect on the properties and safety of the product.



All personal formulations in these instructions are to be considered gender neutral.

These operating instructions apply to persons who have been supervised or instructed in the operation of the device by a person responsible for their safety and who have proven to be able to handle the device.



**Children should be supervised to ensure that they do not play with the appliance. Do not leave the children unattended.**

All information contained in this Operating Manual is accurate to the best of our knowledge and belief. Neither the author nor the publisher, however, can be held liable for damages or losses that arise in connection with the use of this Operating Manual.

Other product, brand or company designations specified in this document are possibly the trademarks of their respective owners. Compliance with all applicable copyright laws is the responsibility of the user of this document.

## Important safety instructions:

### ATTENTION:

- Do not open the device to reduce the risk of an electric shock.
- The device contains no maintenance parts. Please contact qualified personnel for service operations.

### WARNING:

- To reduce the risk of fire or electric shocks, do not expose this unit to rain or moisture.



- This symbol indicates a non-isolated, hazardous voltage within the enclosure voltage sufficient to present a risk of electric shock.



- This symbol indicates important operating and maintenance instructions in the manual. Please read the manual.

## Detailed safety instructions:

- Read the manual.
- Keep the manual.
- Note all warnings.
- Follow all instructions.
- Do not use the device near water.
- Clean the device with a dry cloth.
- Do not block any vents.
- Do not place the device near heat sources such as radiators, stoves or other appliances that generate heat.
- Do not pinch or step on the power cords, especially to the plugs, extension cords and where they leave the device.
- Use only accessories recommended by the manufacturer.
- Use only trolleys, stands, tripods, brackets or tables which are specified by the manufacturer. Be careful when moving the carriage/equipment combination to avoid injury from tripping.
- Disconnect this device from storms or when you are not using it for a long time.
- Refer to qualified service personnel for all maintenance. Maintenance is required if the device has been damaged in any way. For example if the power cord or plug is damaged, liquid has been spilled, objects have fallen into the unit, the device has been exposed to rain or moisture, the device does not work properly or has been dropped.



## Instruction:

The mixer is a 4-channel mixer with a variety of installed functions and is built in a rugged housing.

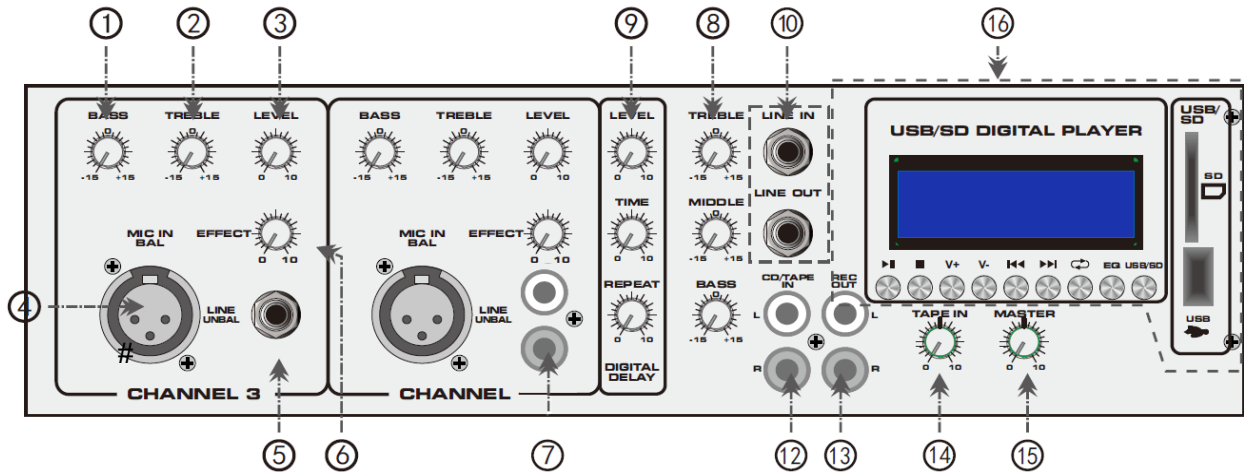
## Technical specification:

- 4 Mic / Line-input Channels
- USB/SD Player, for playing of WMA and MP3 files
- 2-Band-EQ allows separate settings for different acoustic adjustment options
- Installed digital delay effect that allows users to create a reverberation or atmosphere to the vocals or connected instrument.
- Speaker max power 150W, Mixer amplifier max power 100W

## Precautionary measures:

- Connect the power cord to main power socket as described in this manual. Do not bend, twist, pull or heat the power cord.
- Do not place heavy objects, including this mixer, on the power cord. A damaged power cord may cause fire or electric shocks.
- Do not let water or liquids flow into the unit. Liquids in this device may cause fire or electric shocks.
- Never open and / or modify the device under any circumstances. Otherwise, a fire or electric shocks may be caused. There are no parts inside that can be used for a service by the user.
- Consult qualified service personnel for all maintenance work.
- Turn off the device and contact your merchant immediately if the device is damaged or malfunctioning.

**Description of the front view:**



**1. Bass:**

The controller has shelving response giving 15dB of boost or cut at 80Hz. Turning to the right adds warmth to vocals or extra punch to guitars, drums and synthesizers. Turn to the left to reduce stage rumble, hum, or to improve mushy sound.

**2. Treble:**

Turn to the right to boost high frequencies. This adds crispness to percussion from drum machines, cymbals, and synthesizers. Turn to the left to cut these frequencies. This reduces sibilance or hiss. The control has a shelving response giving 15dB of boost or cut at 12 kHz.

**3. Volume:**

This level controller adjust the amount of channel signal in the mix and provides a clear visual indication of the channel level.

**4. Microphone Input (symmetric):**

The MIC input accepts XLR connectors for low impedance microphones. The input impedance is 2 kOhm.

**5. Line Input Unbalanced:**

Inputs can be connected from guitars, synthesizers, drum machines, CD players, and other line level devices. The input impedance is 10kohm.

**6. Effect Control:**

This controller adjusts the level sent to the built-in digital delay effect control (effect portion).

**7. Cinch-Line Input:**

Channel 4 accepts RCA connectors for stereo line level devices. You can use either the microphone input or the channel 4 RCA inputs.

### **8. 3-Band Equalizer:**

These 3 controllers are responsible for controlling the sound from the Master Signal.

#### **TREBLE**

This knob controls the high-frequency range of the sound.

#### **MIDDLE**

This knob controls the mid-frequency range of the sound.

#### **BASS**

This knob controls the low frequency range of the sound.

### **9. Digital Delay Effect:**

The signal from the input channels (effect knobs 1-4) is processed by the built-in delay effect and sent to the master output. There are three controls that let you control the effect of the delay effect.

#### **LEVEL (Volume)**

Here you can adjust the volume of the effect component.

#### **TIME**

This button sets the time interval of the delays. Turn it to the right to increase the time interval between two delays.

#### **REPEAT**

Increasing of the repetition rate. If you turn this controller to the right, the signal will be repeated more often. 0 = no repetition, 10 = infinite repetitions.

### **10. LINE IN/OUT:**

These unbalanced 1/4 "phone jacks offer line-in and line-out capabilities. Use these connectors for a connection to external devices (for example, 31 Band EQ).

### **12. TAPE IN (CD/TAPE IN):**

This is a stereo input (RCA), via which the signal of an external sound source (laptop, mobile phone, etc.) can be added to the sum signal. Volume is adjustable via the controller 14.

### **13. REC OUT (REC):**

This is a stereo output (RCA) for connecting an external recording device.

### **14. CD/TAPE IN Volume Controller:**



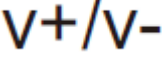



This controller is used to adjust the volume of the devices which are connected to input 12.

**15. Master Volume Controller:**

This control regulates the entire volume.  
It controls the main signal that outputs to the speaker.

**16. USB/SD Player:**

(These buttons are only for the operation of USB and SD playback.  
The equalizer also affects only the USB and SD playback).

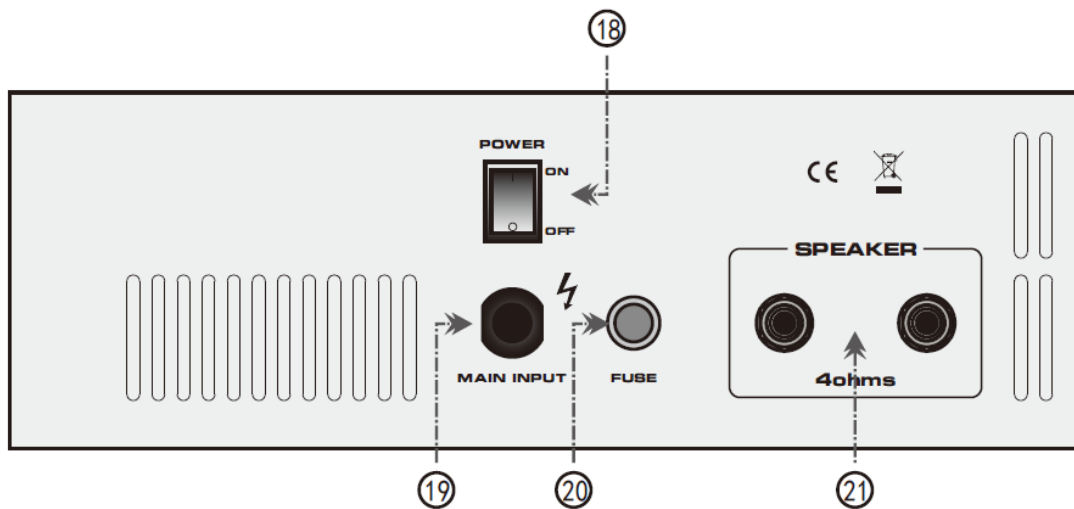
- Play/Pause 
- Stop 
- Volume 
- Backward 
- Forward 
- Repeat 
- Equalizer EQ
- Selection key between USB / SD

**CONNECT BT-DEVICE**

1. Set the search function on of the BT device (Handy, Laptop, etc.) you want to play the music. See the operating instructions for your device.
2. Press the "MODE" button and activate BT-function.
3. Find on your BT-device "PM42U" and make the connection.

**Attention:** The BT distance is approx. 10 meter without any barrier.

## Description of the rear view:



### 19. Power Connection for socket:

This cable is used to power the device.

Attention: Make sure that the main voltage matches the voltage of the product before switching on the device.

### 20. Fuse socket:

This fuse should protect your device for power overloads.

Attention: If the fuse has been damaged, the device will not work. It must be replaced by the same type and same specifications. If this does not solve the problem, have the unit serviced by qualified personnel.

### 21. Speaker Output:

Two speakers can be connected to these jacks. Connect the two passive speakers with these outputs. Use 16 $\Omega$  speakers when 4 speakers are used at the same time. If only one speaker is used, use a 4-8 $\Omega$  Speaker.

## Specifications:

### Input Impedance

Mic: 2K Ohm (Balanced), 1K Ohm (Unbalanced)  
Line: 10K Ohm  
Tape In: 47K Ohm

### Input-Channel-EQ

High EQ:  $\pm 15\text{dB}$  @ 12KHz  
Low EQ:  $\pm 15\text{dB}$  @ 80Hz

### Digital Delay Time

Time: 140-342ms

### Frequency Response

Mixer amplifier: 20Hz-20KHz + 1dB / -3dB @ 1W Output to 8 Ohm Speaker  
Speaker: 60Hz-18kHz

### Harmonic Overall Distortion (THD)

<10% at 20Hz-20KHz for an output power of 55W to a 4 ohms speaker

### Peak power:

2x100W

### RMS power:

2x50W

### Power Consumption

150W

### Power Requirement

AC115V/230V, 50/60Hz

## Maintenance

Your appliance does not require any particular maintenance. However, in the event of a malfunction, **contact an Approved Service Center.**

## Cleaning

Use a slightly damp cloth

## WEEE Declaration (Waste of Electrical and Electronic Equipment)

Your product has been designed and manufactured using quality materials and components that are recyclable and reusable. The symbol means that your product must be disposed separately from household waste at the end of its service life.

Dispose of this equipment at your local collection point or recycling center.

Please help to protect the environment in which we all live.

## SIMPLIFIED EU DECLARATION OF CONFORMITY

Herewith Musikhaus Kirstein GmbH declares that the radio unit of Model [Pronomic PM42U MKII MP3 Powermischer] is in compliance with the EU directive 2014/53/EU. You can download the full EU declaration of conformity for this item under download link:

[http://www.kirstein.de/docs/Konformitaetserklaerung/CE\\_Konformitaetserklaerung\\_00067254.pdf](http://www.kirstein.de/docs/Konformitaetserklaerung/CE_Konformitaetserklaerung_00067254.pdf)

All specifications and appearances are subject to change without notice. All information was correct at time of printing. Musikhaus Kirstein GmbH does not guarantee for the accuracy or completeness of any description, photograph or statement contained in this manual. Printed colors and specifications may vary slightly from product. Products from Musikhaus Kirstein GmbH are only sold through authorized dealer. Distributors and dealers are not agents of Musikhaus Kirstein GmbH and have no authority to bind Musikhaus Kirstein GmbH legally in any way.

 **KIRSTEIN.de**

**Musikhaus Kirstein GmbH**

**Bernbeurener Str. 11**

**86956 Schongau – Germany**

**Telefon/Phone: 0049-8861-909494-0**

**Telefax/Fax: 0049-8861-909494-19**

