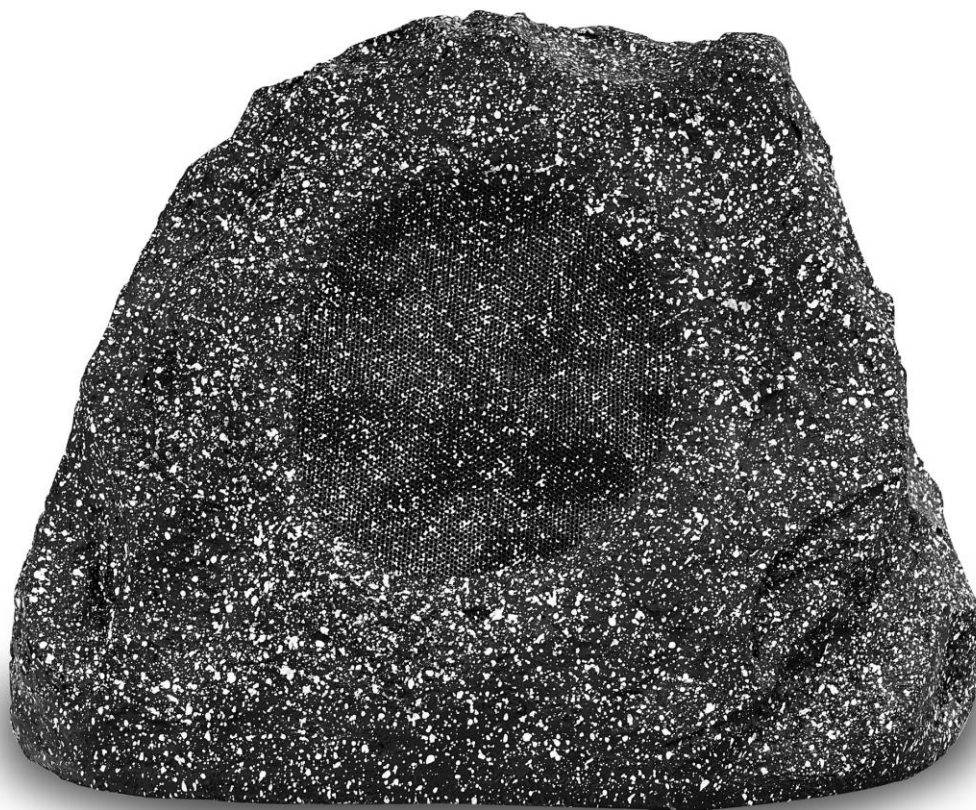


Pronomic SSP Series Outdoor-Loudspeaker

Item No.: 00044860/00055130



Operating Manual

Revision: *-02-2020

© 2020

This manual is protected by copyright. Any copying or reprint, even in excerpts, is only allowed with written consent of Musikhaus Kirstein GmbH. The same applies to reproduction or copying of images, even in altered form.

Thank you for purchasing this product. To ensure you will be completely satisfied with this product, read and understand this manual carefully before use. Keep the manual in a safe place. The Operating Manual must be passed on to all subsequent users.



Follow the Operating Manual!

 **WARNING**

The signal word **WARNING** identifies hazards, which can result without precautions in serious injury.

 **NOTE**

The signal word **NOTE** indicates general precautions, which should be observed in handling the product.

 **NOTE**

Images used in this manual may differ slightly from the actual product, as long as it has no adverse effect on the properties and safety of the product.

 **NOTE**

All personal formulations in these instructions are to be considered gender neutral.

These operating instructions apply to persons who have been supervised or instructed in the operation of the unit by a person responsible for their safety and who have proven to be able to handle the unit.

 **WARNING**

Children should be supervised to ensure that they do not play with the unit. Do not leave the children unattended.

All information contained in this Operating Manual is accurate to the best of our knowledge and belief. Neither the author nor the publisher, however, can be held liable for damages or losses that arise in connection with the use of this Operating Manual.

Other product, brand or company designations specified in this document are possibly the trademarks of their respective owners. Compliance with all applicable copyright laws is the responsibility of the user of this document.

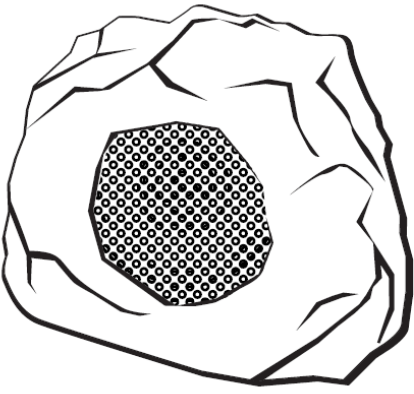

SAFETY

 **WARNING**

Make sure that the unit is positioned so that no one can trip over the power cord.

- Do not place this product near heat sources such as radiators, vents or other devices that generate unusual heat;
- Do not open this product. In the event of a malfunction, contact a qualified service technician or the dealer;
- Do not leave this product plugged in when not in use for a long time;
- Do not place any objects on the product.

Package Contents

	
<p>Speaker</p>	<p>User manual</p>

Technical Data and Specifications

	00044860 SSP-660	00055130 SSP-1100
Frequency Response (-10dB)	75Hz - 20KHz	65Hz - 20KHz
Sensitivity (1W/1M)	87dB	89dB
Impedance (Ω)	8	8
RMS-Power	40W	50W
PEAK-Power	80W	100W
Material	LLDPE	LLDPE
IP-Rating	IP56	IP56

Intended purpose /Protection Class IP56

This device is designed for indoor and outdoor use. The guarantee does not apply to devices that are used for professional use.

The device corresponds to the IP56 protection class and is therefore suitable for outdoor use. The so-called IP code (International Protection Code) indicates the suitability of an electronic device at certain temperatures, humidity, vapors, dust and other conditions. Degree of protection IP56 means that the device is protected against strong water jets (e.g. rain) and the housing also offers complete protection when touched. Furthermore, dust, even in normally damaging quantities, cannot harm this device.

Nevertheless, the following information applies for security reasons:

- Never connect / disconnect the mains plug with wet hands.
- Do not use the loudspeaker **in the water** (pool, lake, bath tub or similar) and make sure that the device cannot fall into the water.
- In the event of storm-like precipitation and / or extreme weather conditions (e.g. flooding or heavy snowfall, winter climate), you should bring the device to a safe place.

Important Safety Precautions



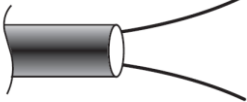
NOTE

Follow these safety precautions

- 1.** Before installing on the wall, make sure the wall structure is reliable and the speaker can be attached securely.
- 2.** Install the speaker in a location on the wall that can support the weight of the speaker and its mounting hardware. Otherwise, the device may fall and cause injuries.
- 3.** Do not use nails, adhesives or other means that are not recommended in the operating instructions. The loudspeaker can easily fall off if it is used for a long period of time and vibrates.
- 4.** Do not touch or damage the speaker membranes.
- 5.** When connecting or disconnecting the connection cables, make sure that all involved devices are switched off.
- 6.** The Musikhaus KIRSTEIN is not liable for personal injury caused by non-compliance with the safety recommendations and warnings. This also applies to all other damage in whatever form.

Installation / Connections

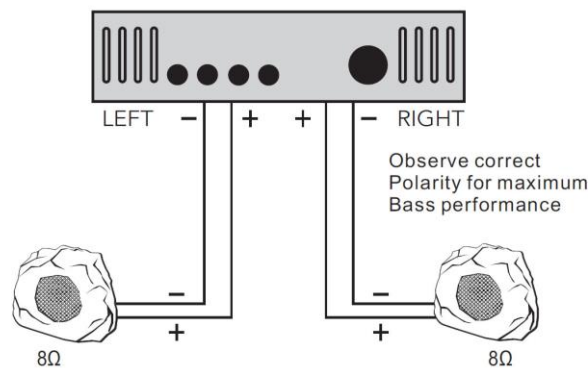
Using voltages, Impedancies and power amplifiers other than those specified on the device can irreparably damage the device.

	00044860 SSP-660 Black (common) Red (8 Ohm)	00055130 SSP-1100 Black (common) Red (8 Ohm)
---	---	--

Depending on the type of installation, direct burial of the speaker wires from the amplifier to the loudspeakers may be adequate, or the use of 12 ID conduit may be required for protecting the wires from possible physical damage if future excavation or other alterations are anticipated in the area of the installation.

Connect the device

Pay attention to the correct polarity when connecting the speakers: + (red plug) / - (black plug).



2-CHANNEL AMPLIFIER WITH 8Ω OUTPUT

CLEANING

Before cleaning, make sure that all involved devices are switched off. The speaker housing only needs to be dusted occasionally with a dry cloth. Please do not touch the membranes. Do not try to clean the speakers with chemical solvents as this can damage the paint surface or technical parts.

WEEE Declaration**(Waste of Electrical and Electronic Equipment)**

Your product has been designed and manufactured using quality materials and components that are recyclable and reusable. The symbol means that your product must be disposed separately from household waste at the end of its service life.

Dispose of this equipment at your local collection point or recycling center.

Please help to protect the environment in which we all live.

All specifications and appearances are subject to change without notice. All information was correct at time of printing. Musikhaus Kirstein GmbH does not guarantee for the accuracy or completeness of any description, photograph or statement contained in this manual. Printed colors and specifications may vary slightly from product. Products from Musikhaus Kirstein GmbH are only sold through authorized dealer. Distributors and dealers are not agents of Musikhaus Kirstein GmbH and have no authority to bind Musikhaus Kirstein GmbH legally in any way.

**Musikhaus Kirstein GmbH****Bernbeurener Str. 11****86956 Schongau – Germany****Telefon/Phone: 0049-8861-909494-0****Telefax/Fax: 0049-8861-909494-19**